

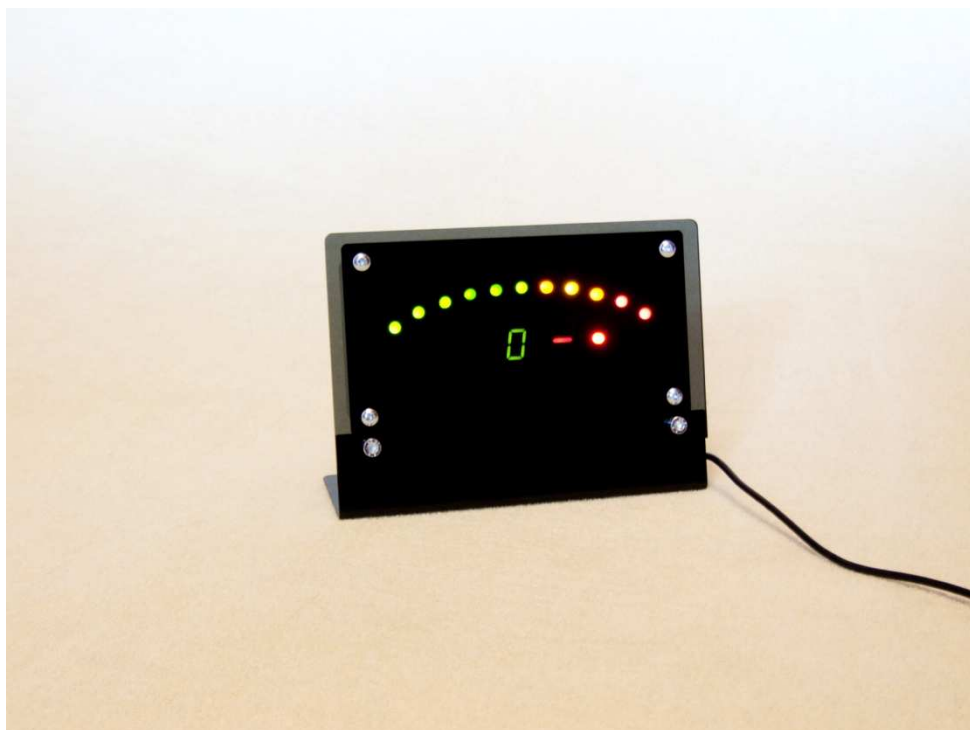


More at : <http://raceboard.simracing.pl>

Contact: raceboard@simracing.pl

raceBOARD-S

Last modification: 2011-11-15



Introduction

Thank You for choosing our product series raceBOARD, our goal is to ensure that our products are good quality and reasonable price. We also strive to meet the expectations of customers. We are still developing the software adding new functions.

Our devices are designed for PCs with Windows system, and at the moment supports the following simulators:

- Dirt 2 / Dirt 3
- F1 2010
- F1 2011
- GameStockCar
- GT Legends
- GTR2
- KartRacingPro
- iRacing
- Live for Speed
- Race07 / Race On
- rFactor
- Shift 2

Minimum requirements:

- Windows XP/Vista/7 (32 or 64bit)
- USB 2.0 port
- Microsoft .NET Framework 2.0

raceBOARD-S can display following data:

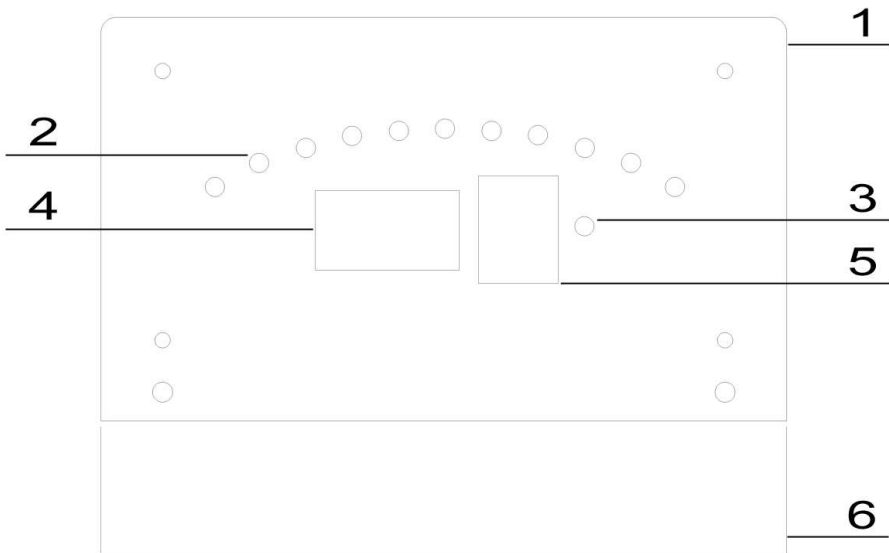
- speed (km/h or mph)
- gear
- engine RPM
- shift light indicator
- speed limiter indicator
- laps
- position
- engine temperature
- fuel remaining
- gap to driver in front
- advantage on driver behind
- remaining laps/time

Following table shows supported information for every supported simulation.

	Dirt 2 / Dirt 3	F1 2010	F1 2011	GameStockCar	GT Legends	GTR2	KartRacingPro	iRacing	Live For Speed	Race07 / Race On	rFactor	Shift 2
Speed	+	+	+	+	+	+	+	+	+	+	+	+
Gear	+	+	+	+	+	+	+	+	+	+	+	+
RPM	+	+	+	+	+	+	+	+	+	+	+	+
Shift Light	+	+	+	+	+	+	+	+	+	+	+	+
Pit Limiter					+	+		+	+	+	+	
Laps	+	+	+	+	+	+	+	+		+	+	
Position				+	+	+		+		+	+	
Engine temperature				+	+	+	+	+	+	+	+	
Fuel				+	+	+	+	+	+	+	+	
Gap				+				+			+	
Advantage				+				+			+	
Remaining				+				+			+	

Read these instruction before plug-in device.

1.1 Device diagram



- 1** – Front panel
- 2** – 11 RPM LEDs
- 3** – Shift Light LED
- 4** – Speed display
- 5** – Gear display
- 6** – Detachable stand

1.2 Power source

raceBOARD-S device is powered from the USB port and requires no external power supply.

Software installation and launching device

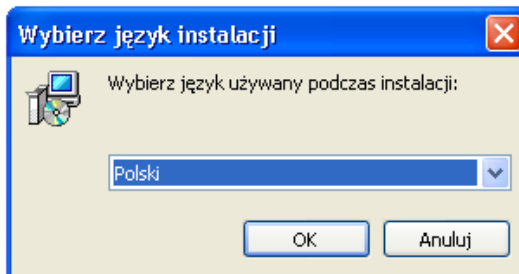
2.1 Latest software version

Latest software version for raceBOARD series devices can be downloaded from website <http://raceboard.simracing.pl/download>

2.2 Software installation

Ensure You have logon on Your PC with Windows administrator rights account. Start installation process by double click on downloaded setup file.

2.2.1 Installation language selection



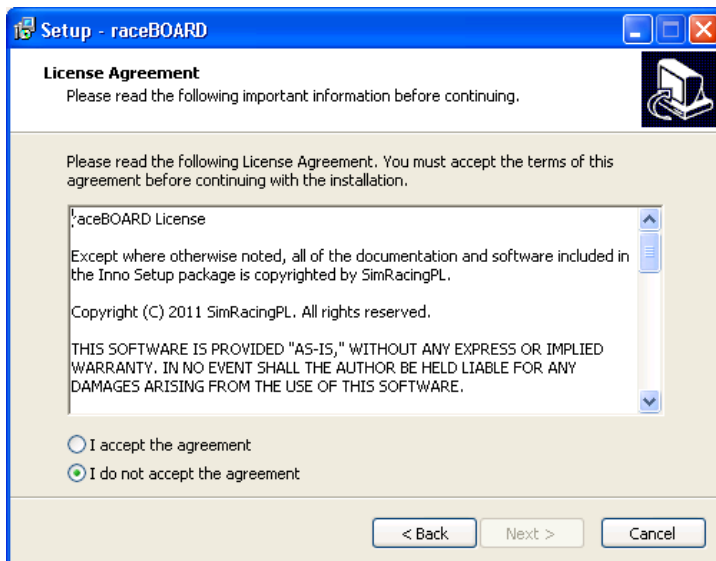
Choose setup preferable language. Click **OK** to proceed.

2.2.2 Welcome page



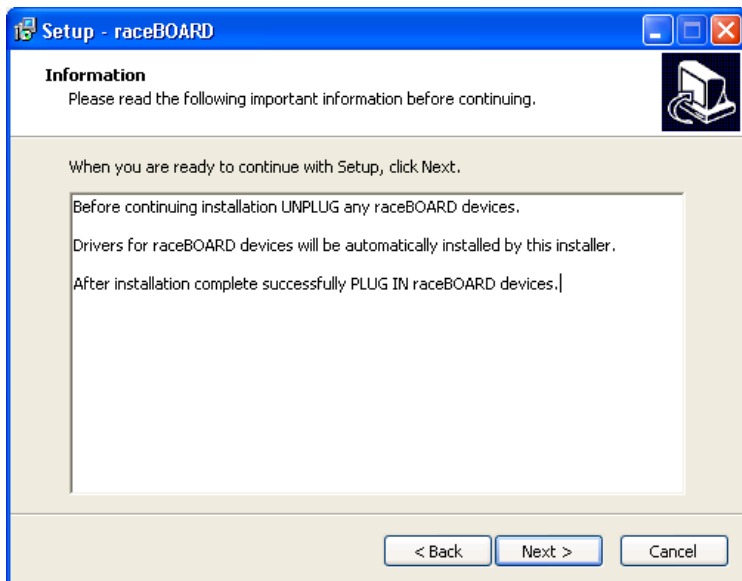
You are informed about software version You are about to install. Make sure to close all other applications before continuing. Press **NEXT** button to proceed.

2.2.3 License agreement



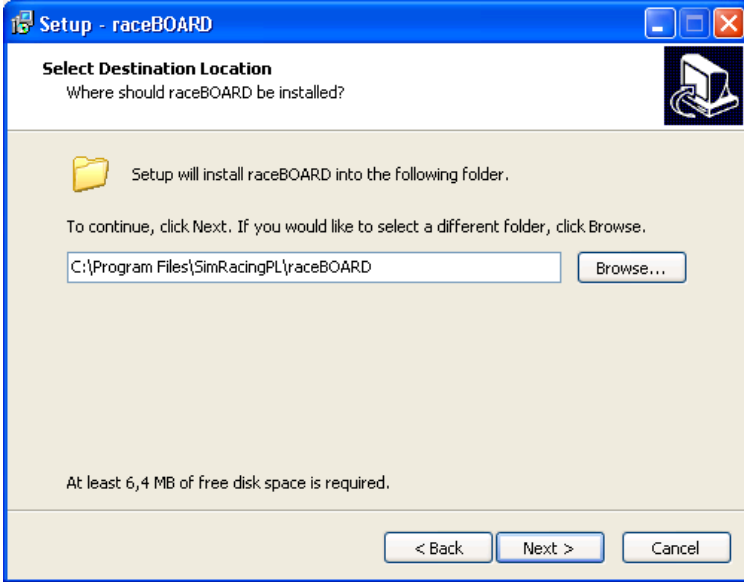
Carefully license agreement before continuing. Check **I accept the agreement** and click **NEXT** button to proceed.

2.2.4 Information before installation



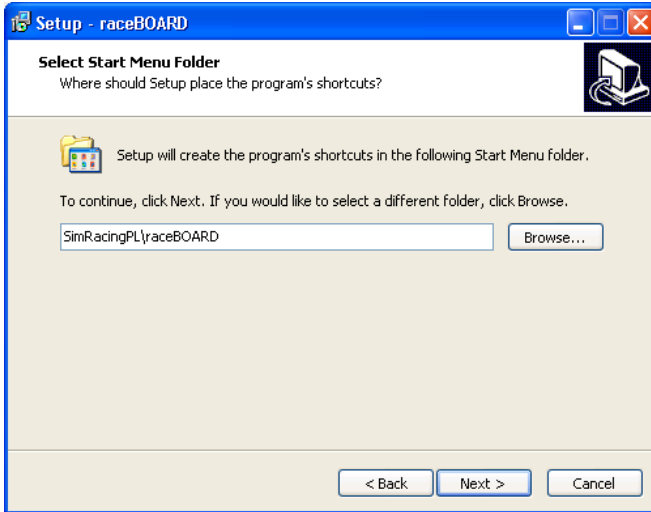
Make sure the device is not plugged in before continuing. Click **NEXT** to proceed.

2.2.5 Installation directory



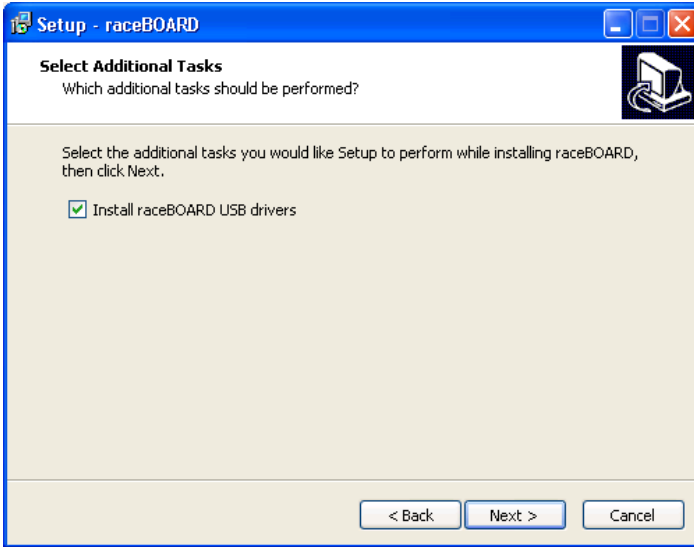
Select preferable installation directory or leave default path. Click **NEXT** to proceed.

2.2.6 Start Menu folder



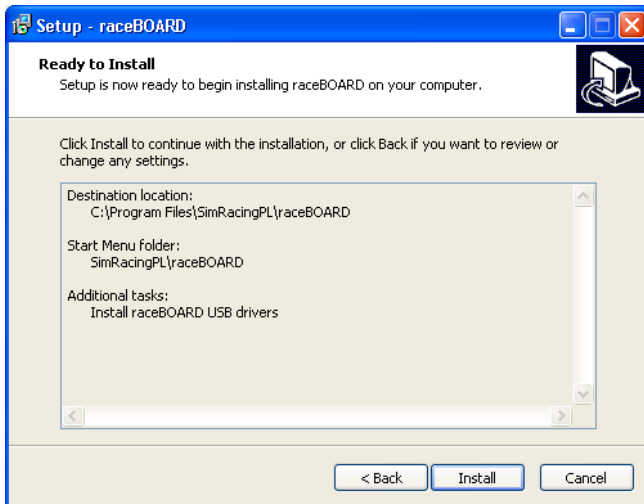
Select preferable Start Menu folder or leave default selection. Click **NEXT** to proceed.

2.2.7 Additional tasks



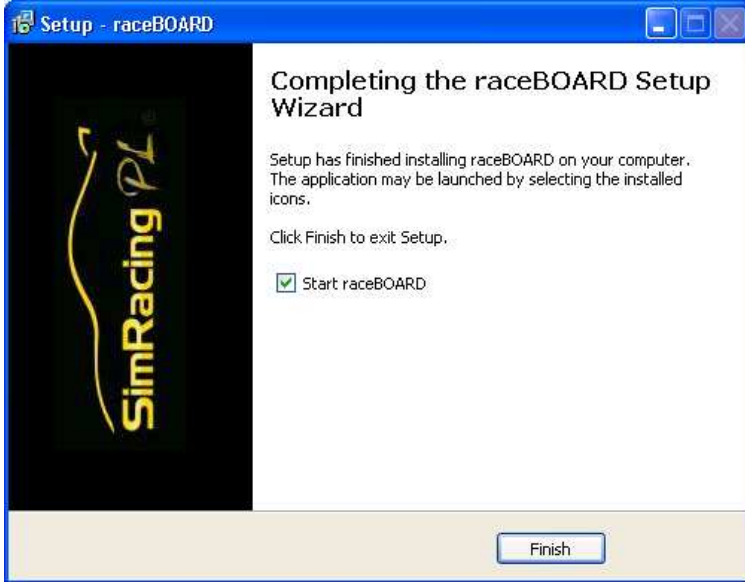
raceBOARD devices require USB drivers. Installer can automatically install these drivers. If You have installed USB drivers before, uncheck this option. You can manually install drivers (described later in these manual). Click **NEXT** to proceed.

2.2.8 Installation start



Click **INSTALL** to start installation.

2.2.9 End of installation



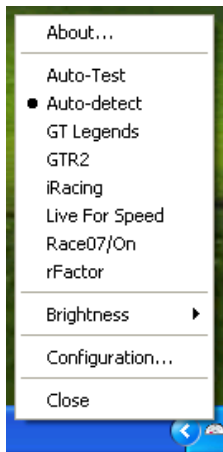
Congratulations. Install process is completed. Check **Start raceBOARD** to start application. Click **FINISH** to close installer window.

2.3 Application start

From **Start Menu** select **SimRacingPL/raceBOARD** folder and click **raceBOARD**. Application will start in system tray.



Click right mouse button at icon to open menu.



Application can start at Windows start. All You have to do is to check the option **Start application at Windows start** in the configuration window.

2.4 First run of device

If You haven't check automatic drivers installation, You need to install it manually. It can be achieved in one of two methods:

- Automatic drivers installer – just execute file **CDM20814_Setup.exe** located in **USB** directory which is in the installation directory (default **C:\Program files (x86)\SimRacingPL\raceBOARD**).
- Manually – plug-in device, Windows will start install it, when it fails, check option to select drivers from disk and point it to directory **CDM20814_WHQL_Certified** located in **USB** directory which is in the installation directory (default **C:\Program files (x86)\SimRacingPL\raceBOARD**).

Now You can plug-in device in to USB port. If attached USB cable is too short, You can use USB cable extender but according to USB standards it may not be longer than 5 meters.

When raceBOARD application detects device, it will display its version i.e. **raceBOARD-S** on the speed display.

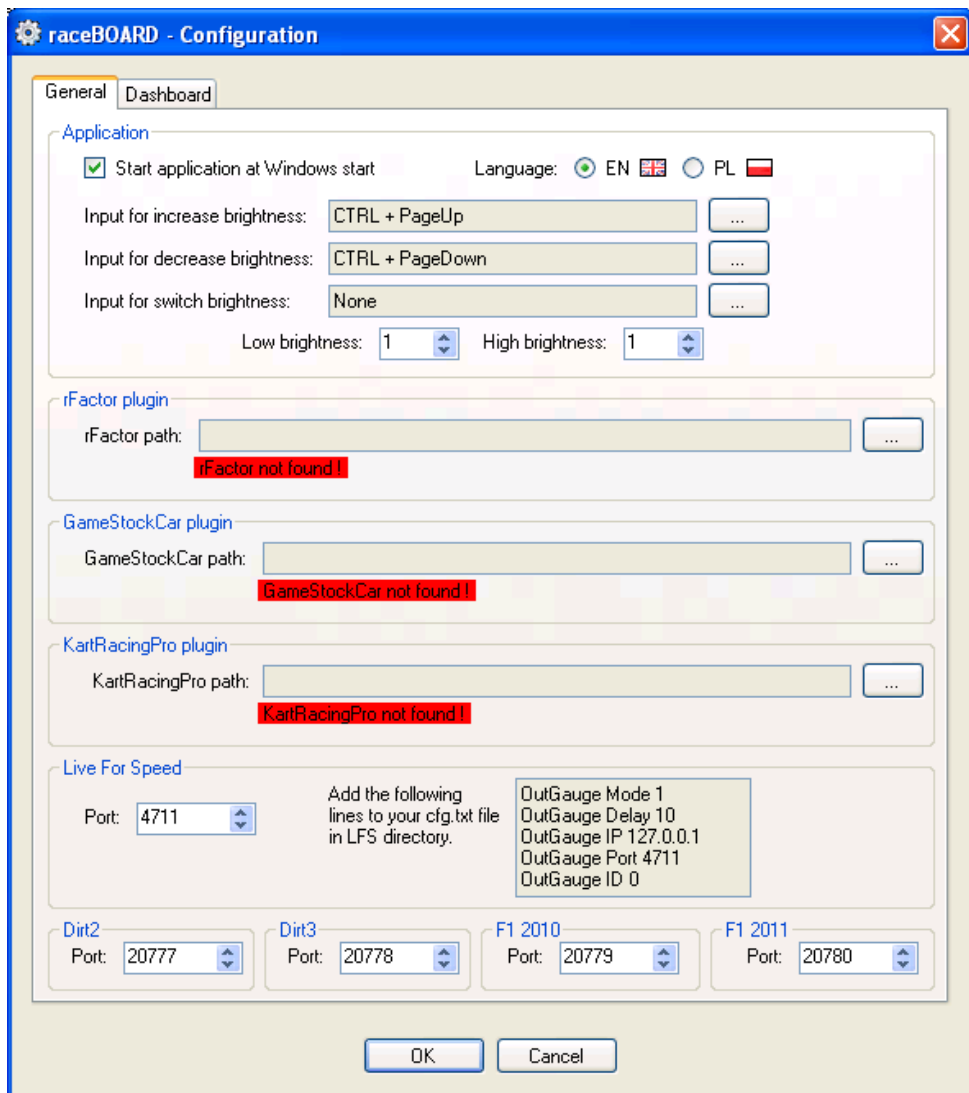
2.5 Device auto-test

raceBORD application has a function named **Auto-Test**. It can be used to test Your device. Open application menu and click on **Auto-Test** item. Now You can check if all LED and displays are working. If not, contact support team.

After test, You can change running mode from **Auto-Test** to **Auto-detect**.

Configuration

To open a configuration window, select **Configuration...** from application's menu.



There are two tab pages:

General

Application

Start application at Windows start

Application will start automatically with Windows when You log-in.

Language

You can change application language.

Input for increase/decrease brightness

This options allows You to select key shortcut or game controller button to increase or decrease brightness of LEDs and displays.

rFactor plugin

rFactor path

Application has to know rFactor installation directory path to install required plugin to work with Your device. Make sure to do it when rFactor is not running.

GameStockCar plugin

GameStockCar path

Application has to know GameStockCar installation directory path to install required plugin to work with Your device. Make sure to do it when GameStockCar is not running.

KartRacingPro plugin

KartRacingPro path

Application has to know KartRacingPro installation

directory path to install required plugin to work with Your device. Make sure to do it when KartRacingPro is not running.

Live for Speed

Port

Set the port number on which LFS is sending OutGauge data. Make sure to do it when LFS is not running.

Dirt2

Port

Set the port number on which Dirt2 is sending data.

Dirt3

Port

Set the port number on which Dirt3 is sending data.

F1 2010

Port

Set the port number on which F1 2010 is sending data.

F1 2011

Port

Set the port number on which F1 2011 is sending data.

Dashboard

RPM

You can configure levels of maximum RPM when LEDs will be turn on. I.e. when max. RPM is 10.000 and first LED has level 70%, it will be turned on when RPM reaches 7.000 and more. You can also set such a level for shift light. Some simulators does not share when it should be turn on. In that case application will use this level. If You want application to always use it, check the option **Always override shift light**.

Gear display

Reverse gear view

You can choose which segments on gear display should be turn on at reverse gear in simulation. Just click on segments to turn it on/off.

Neutral gear view

Identical to above option but for neutral gear.

Additional informations

Additional informations are displayed on speed display and optionally on gear display.

You can set any game controller button or keyboard keys to show this information. Remember, not every information are available all simulators.

Use gear display

Gear display will be always used to show additional information. In that case, it will show code of information. For every additional information you can set to automatically use gear display. It allows to save gear display and it will be used only when it is required.

Additional informations list

For every information you can assign button or key input to show it. Uncheck option S to omit displaying information when Next input is in use. Check option H to hide information when input is released. Option G allows to automatically use gear display.

Next information

This is special input which allows to cycle through all enabled and supported information in simulator.

Others

Speed display

Select preferable speed unit (km/h or mph). You can also check **Show leading zeros** option. In that case when speed is i.e. 75 display will show 075.

Flash RPM lights when pit limiter is activated

You can enable flashing all RPM lights and adjust its flashing speed. When pit limiter is enabled in simulator, all RPM LEDs will flash.

Flash shift light

Checking this option will force shift light to flash instead of lightning constantly. It is easier to note when it flashes.

Fuel units

Select preferable fuel units.

Temperature units

Select preferable temperature units.

Running device with simulators

raceBOARD application can work in three modes:

Auto-Test – this mode is designed for testing purpose, select it when You want to check that all LEDs and displays works fine.

Auto-detect – in this mode application is looking for running simulators and when found one its data are use to display information on device. When using a few simulator, it is the best choice.

Manual select simulator – in this mode You have to choose simulator from application menu. Its good choice when using only one simulator.

Simulators

Dirt2, Dirt3, F1 2010, F1 2011

To enabled support for these simulators, find file **hardware_settings_config.xml** in directory:

My Documents\My Games\Dirt2 - for Dirt2

My Documents\My Games\Dirt3 - for Dirt3

My Documents\My Games\F1 2010 - for F1 2010

My Documents\My Games\F1 2011 - for F1 2011

Open it and find following text:

<motion enabled="**true**" ip="**127.0.0.1**" port="**20777**" delay="**1**" extradata="**1**" />. In bold font pointed changes to original file.

Port option may be the same as is raceBOARD configuration.

iRacing

There is no configuration for this simulator.

GT Legends, GTR2, Race07/Race On

There may be need to edit player profile file to enable support for these simulators. Open player profile file from directory:

[game installation]\UserData\[profile name]\[profile name].plr

Find text **Write Shared Memory="0"** and change it **Write Shared Memory="1"**.

Live for Speed

It is required to edit Your cfg.ini file which is located in Live for Speed installation directory. You have to append this file with text copied from Configuration window. Make sure that Live For Speed is not running during editing cfg.ini file.

rFactor

raceBOARD application requires to install special plugin to work with rFactor. Just select Your rFactor installation path and plugin will be installed automatically. When it is installed, in Configuration window You will see a green **rFactor plugin installed** text. Make sure that rFactor is not running when You are selecting rFactor installation path.

GameStockCar

raceBOARD application requires to install special plugin to work with GameStockCar. Just select Your GameStockCar installation path and plugin will be installed automatically. When it is installed, in Configuration window You will see a green **GameStockCar plugin installed** text. Make sure that GameStockCar is not running when You are selecting GameStockCar installation path.

KartRacingPro

raceBOARD application requires to install special plugin to work with KartRacingPro. Just select Your KartRacingPro installation path and plugin will be installed automatically. When it is installed, in Configuration window You will see a green **KartRacingPro plugin**

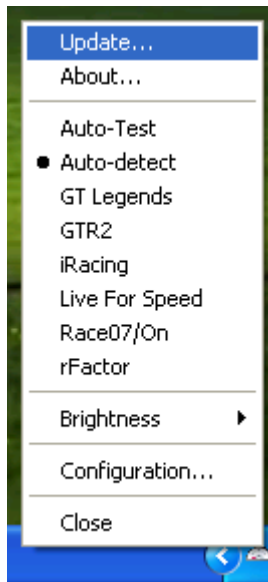
installed text. Make sure that KartRacingPro is not running when You are selecting KartRacingPro installation path.

Application updates

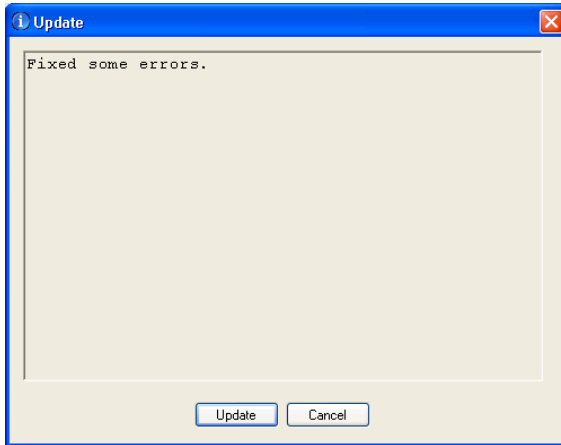
raceBOARD application can automatically download and install founded updated (internet connection and administration rights are required to check and install updates). When application starts it automatically checks for updates. When it found any it will display a notify.



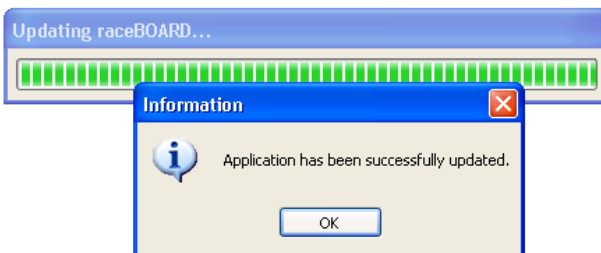
To install updates open application menu and click **Update...** option.



New window will be displayed. You can see what updates are these.



To install updates click **Update** button. Update process will start. In Windows Vista or 7 with activated UAC (logged in with account without administrator rights) there will be dialog for accepting or log in with administrator account. After installing updates message will show.



Click **OK** and raceBOARD application will start again with installed updates.